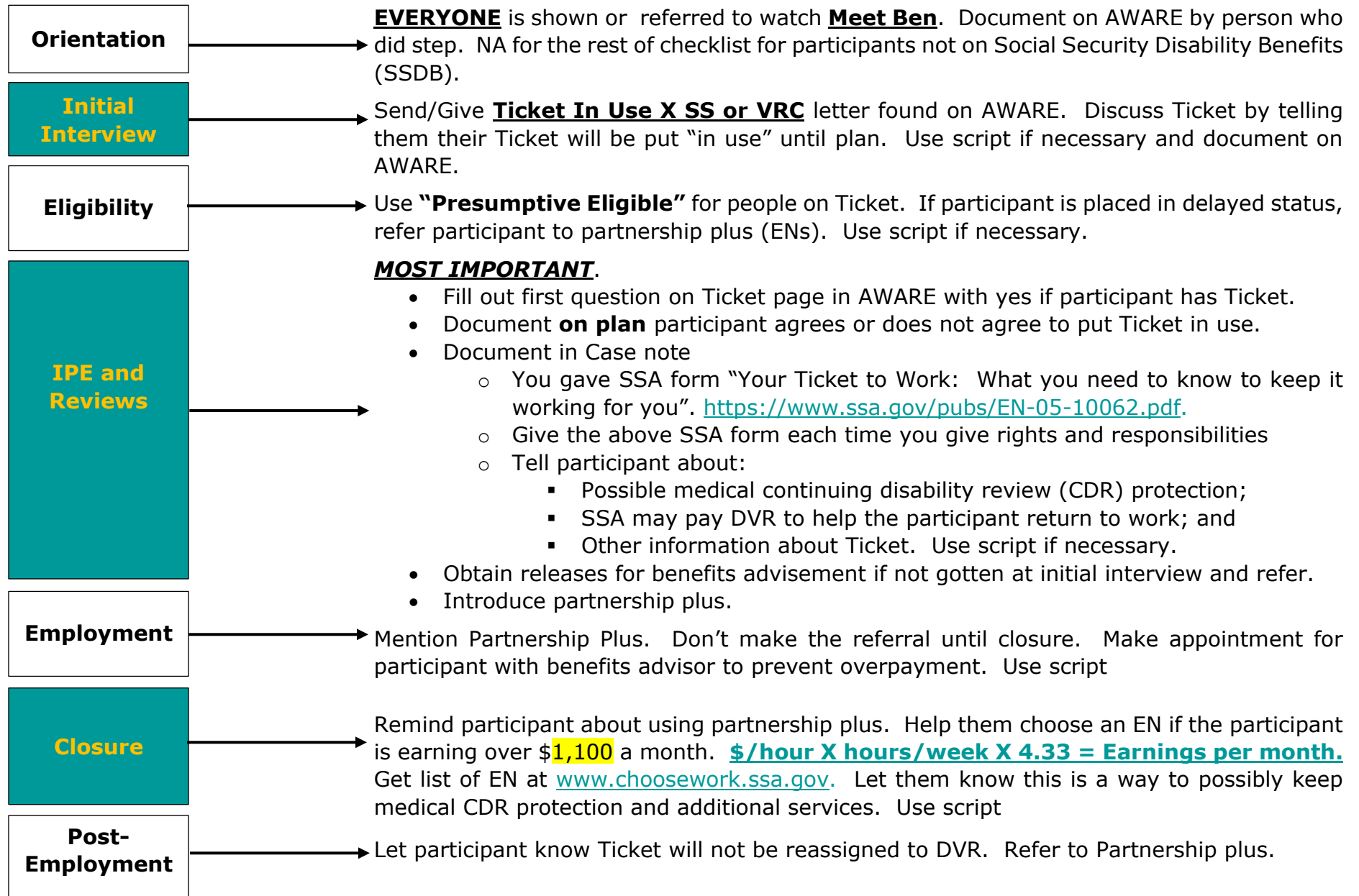


# DVR Rehabilitation Process and the Ticket to Work

For participants getting Social Security Disability benefits ages 18-64



# DVR Rehabilitation Process and the Ticket to Work

VR STEP	DOCUMENTATION REQUIRED	PROVIDED BY	DATE PROVIDED	COMMENTS
<b>Orientation</b>	Case Note attended or referred to Orientation and saw <b>Meet Ben</b> Video	LT/TC	Unknown	Provided at Orientation.
<b>Application</b>	Develop letter on AWARE. This will make a case note on AWARE	ML	11/10	
<b>Eligibility/Delay</b>	Case note any discussion about Ticket. Document referral to EN at Delayed status. Follow Script			NA due to OOS and Priority 1 Rating
<b>IPE</b> All bullets must be completed to get credit	<ul style="list-style-type: none"> <li>Document you gave SSA handout about Ticket.</li> </ul>	JS	7/28/2020	
	<ul style="list-style-type: none"> <li>Document what you told the participant about Ticket</li> </ul>	JS		
	<ul style="list-style-type: none"> <li>Put Benefits Advisement as a service on IPE</li> </ul>			
	<ul style="list-style-type: none"> <li>Put Ticket as service in IPE</li> </ul>			
	<ul style="list-style-type: none"> <li>Document participant decision about Ticket being placed "In use" on the IPE</li> </ul>			
	<ul style="list-style-type: none"> <li>Mention partnership plus and document in case note</li> </ul>			
<b>Employment</b>	Document when you mentioned partnership plus			
<b>Closure</b> All bullets must be completed to get credit	<ul style="list-style-type: none"> <li>Case note calculating SGA</li> </ul>			
	<ul style="list-style-type: none"> <li>Develop and save correct closure letter</li> </ul>			
	<ul style="list-style-type: none"> <li>Case note saying talked about choosing EN <i>if</i> close to SGA.</li> </ul>			
	<ul style="list-style-type: none"> <li>ROI to EN if participant chose EN</li> </ul>			